

THE ERO COLLECTION

ERGONOMIC WORKSTATIONS



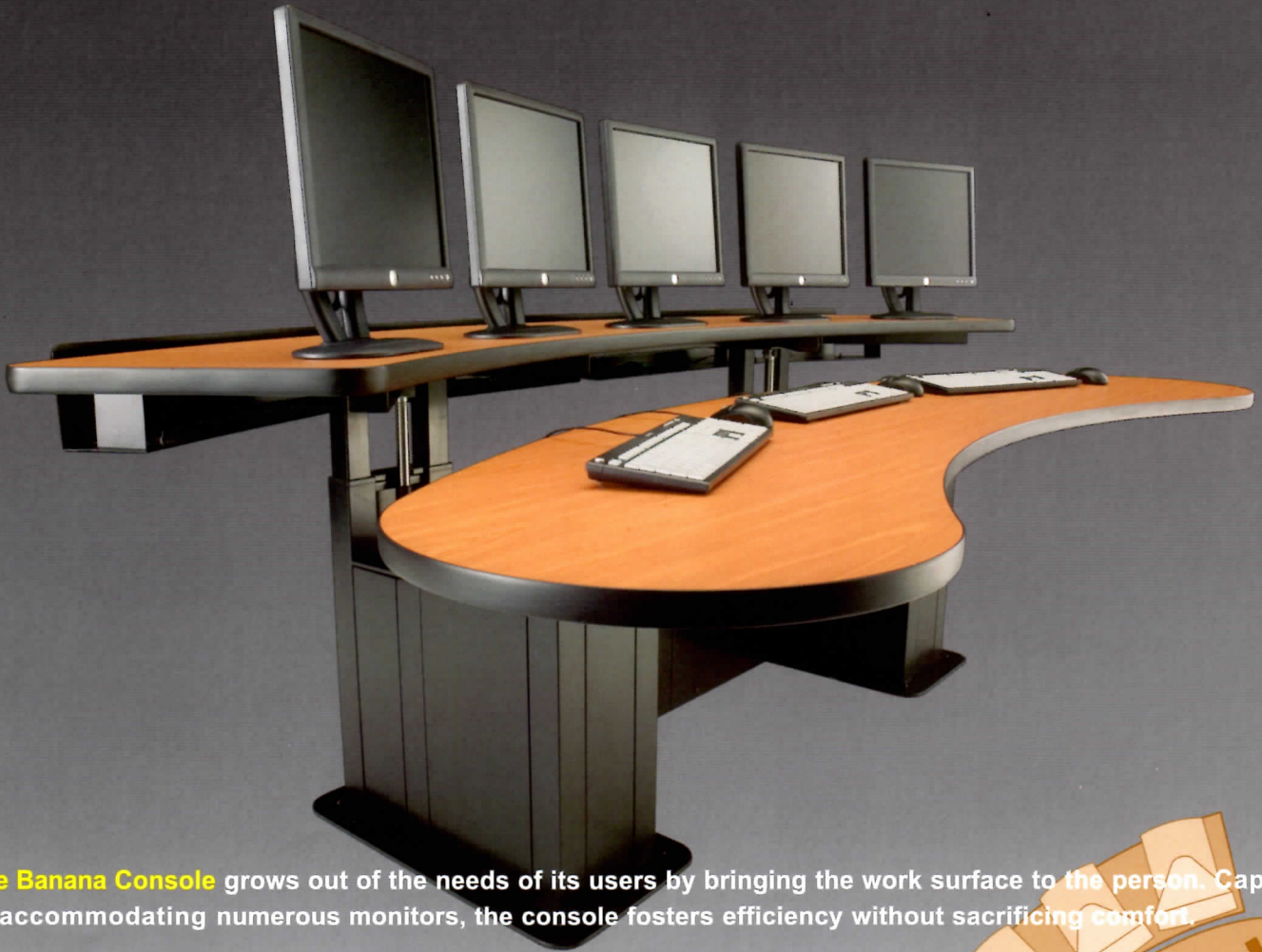
Nature doesn't draw straight lines. The human form isn't comprised of right angles. Should the consoles we sit at challenge the laws of nature, or spring from them?

ErgonomicHome.com +

14611 Sunny Grove Drive
Houston, TX 77070+2325
281+655+9798 | fax: 281+966+1819
tom@ergonomichome.com

VIKING

THE BANANA CONSOLE

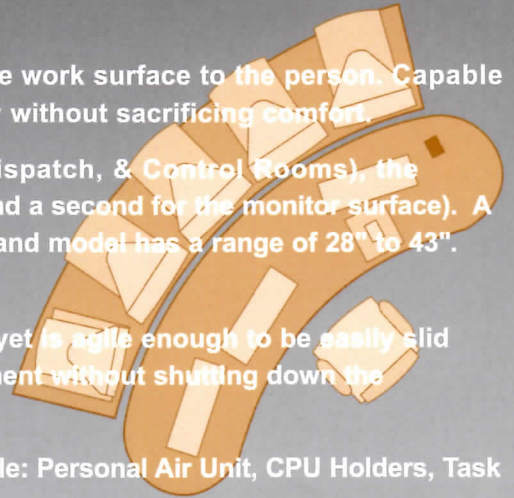


The **Banana Console** grows out of the needs of its users by bringing the work surface to the person. Capable of accommodating numerous monitors, the console fosters efficiency without sacrificing comfort.

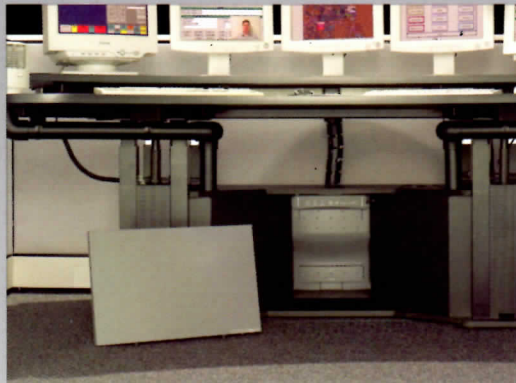
Specifically designed for multi-screen applications (such as: 911 Dispatch, & Control Rooms), the console features dual surfaces (one for the keyboard & work surface, and a second for the monitor surface). A standard unit can be regulated between a height of 24" to 34". The Sit-Stand model has a range of 28" to 43". Available in widths of 72" to 132". Custom shapes are available.

Fully loaded, either surface will support and adjust up to **1000 pounds**, yet is agile enough to be easily slid across carpeted surfaces, allowing technicians to access the equipment without shutting down the networked systems.

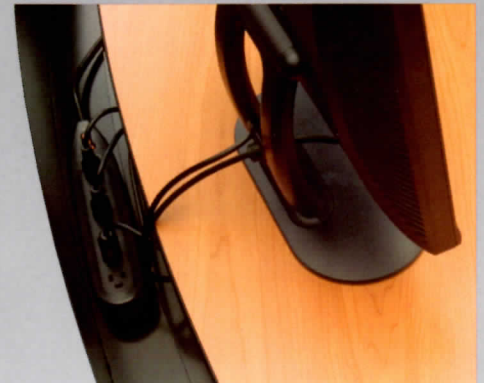
Console (Model BAN24) pictured above is 104"w x 54"d. Options available: Personal Air Unit, CPU Holders, Task Light, Power Strips, and Panels to surround the console.



Both surfaces are electrically adjustable, thus adapting to the comfort of various individuals.



Personal Air Units with radiant heat panel and sound masking are available as an option.



Rear cable tray distributes wiring to and from monitors, and provides space for electrical power strips.

THE CORNER CONSOLE



The Corner Console combines an adjustable rear surface for three side by side monitors and a front surface that provides plenty of surface for multiple keyboards, binders and additional monitors. Designed to maximize the computer users span of control within just 36 square feet of floor space.

Standard unit can be positioned between a height range of 28" to 48" for up to **600 pound capacity per surface**. An extended range model has a range of 25" to 50" for up to **300 pound capacity per surface**. Custom shapes are available that are designed to fit the specific needs of the user and the equipment.

A panel system can be added to surround the workstation and provide defined space, sound control, and distribution of up to four (4) electrical circuits, and data wires. The panels are available in various heights and segmentations in both acoustic and glass panel combinations.

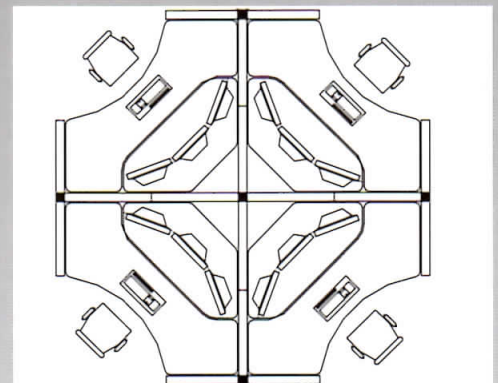
Console pictured (Model CNR7273) above is 70" x 70"w x 30"d.



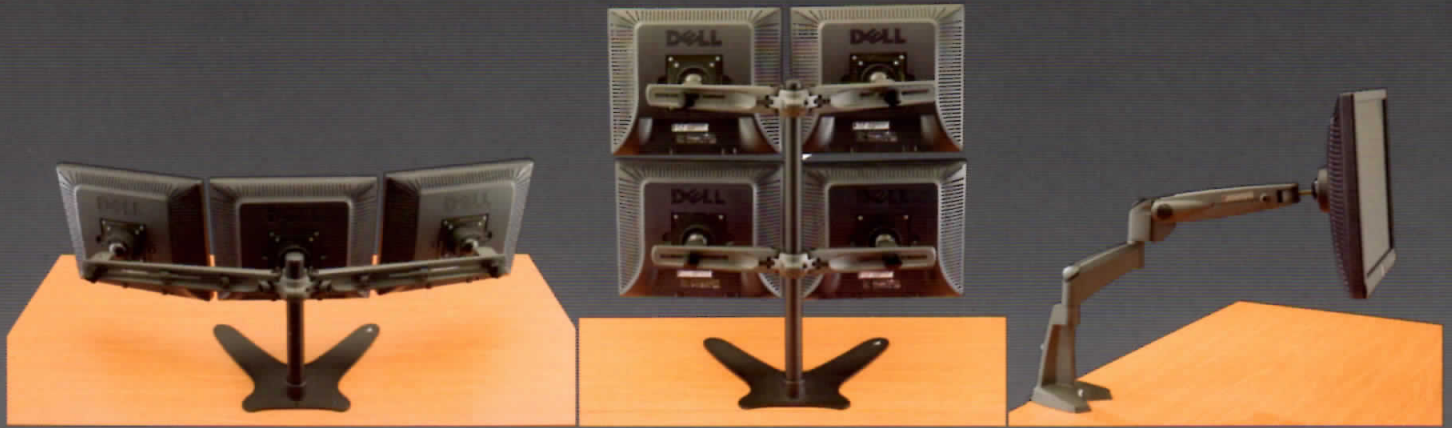
Fixed surface tables provide additional surface needs for records, binders, and equipment such as printers.



Mobile pedestals available in two and three drawer options. (Shown with optional laminate top)



ACCESSORIES



Monitor arms are available in various configurations. Shown left to right are: 1 x 3 model, 2 x 2 model and a single extending arm. Monitor arms are available with three mounting options.



CPU cabinets feature slide-out shelves with multiple cable access points, vented and optional exhaust fans. Available in single or dual level configurations with locking door.

CPU holders can be attached directly to the work surfaces.



Rotating Resource Centers keep binders and manuals close at hand. Available in 36", 42" and 48" diameter.



A full line of laminate casegoods fulfills all your general office furniture requirements.

THE BANANA LITE CONSOLE



The **BANANA LITE Console** responds to the needs of the Radiology Department or the Call Taker position, features dual levels for the keyboard/work surface, and the monitor surface. Standard unit can be positioned between a height range of 28" to 48", up to **600 pound capacity per surface**. An extended range model is available providing a range of 25" to 50" for up to **300 pound capacity per surface**.

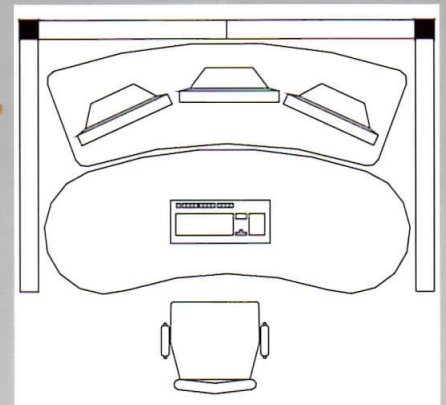
The shape embraces the human form to meet the need of those seated at a computer with multiple monitors, and flows with the natural arc of those moving around the console. Custom shapes are available that are designed to fit the specific needs of the user and the equipment.

The Console pictured (Model LGT18C-2) above is 70" w x 48" d, equipped with cord management (vertical & horizontal).



Single Surface Electric Tables are available in 30" to 72" Widths.

Dual Surface Electric tables are available in multiple depths and widths.



Layout footprint of 72" x 48" with chair.

THE ERO CONSOLE

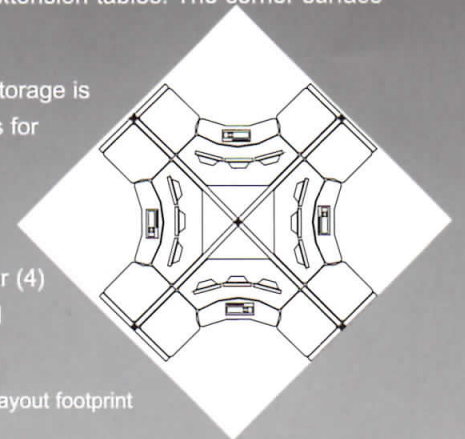


The **ERO Console Workstation** combines an adjustable height corner and fixed height extension tables. The corner surface adjusts to meet the needs of the individual in both a seated and standing position.

The console features dual levels for the keyboard/work surface, and the monitor surface. Storage is available with freestanding or mobile pedestals containing box and file drawers. The cabinets for CPUs are located under the side work surface for easy access.

Custom shapes available to fit the specific needs of the user and the equipment.

A panel system surrounds the workstation to provide defined space, distribution of up to four (4) electrical circuits, and data wire distribution. The panels are available in various heights and segmentations in both acoustic and glass panel combinations.



Quad layout footprint



An optional Spring Assist Keyboard surface adjusts independently of the monitor surface. Spring Assist mechanism provides for both height and tilt adjustment.



Freestanding Pedestals fit under the extension tables.

ACCESSORIES



The Personal Air Unit filters and circulates the air within your environment. Single control adjusts air flow, lighting and white noise. Standard with an occupancy sensor. Optional Radiant Heat panel.



Monitor arm solutions to fit the most demanding of applications.



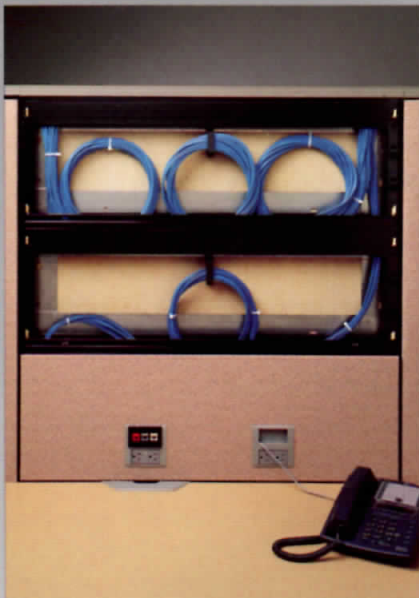
Adjustable glare-free task lighting, 24/7. Fully adjustable arms, 3 way switch, five mounting base options.



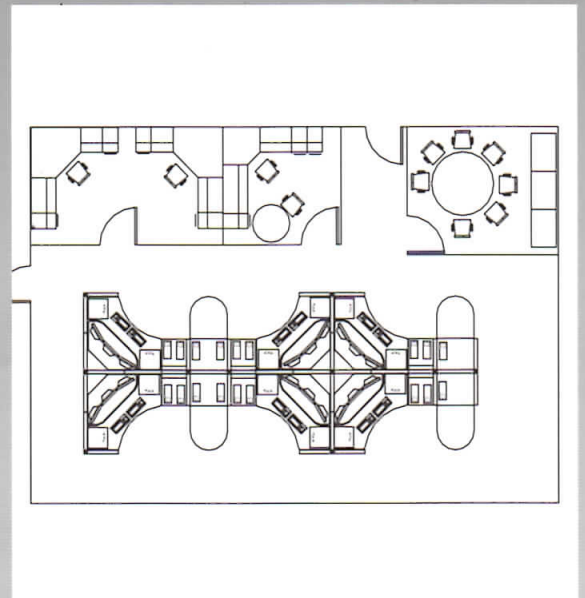
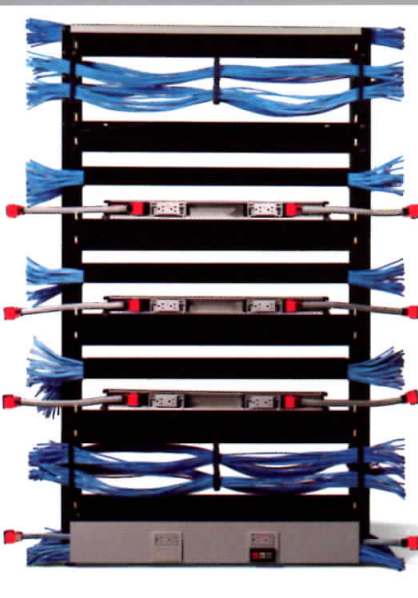
Printer cabinets and equipment stands are available in many sizes and configurations.



Wardrobe and Storage cabinets from The Modular Solutions Catalog.



Consoles may be surrounded by panels that provide acoustical sound absorbing fabric segments, workstation definition, communication cable management, and 4 circuits of electrical power.



Floor plans with the furniture and the equipment in place allow for visualization in planning and installation of your project.



Design with a sensitivity to your environment

Capable of blending with existing environments, the ERO Consoles can be manufactured in colors to match current furniture and cabinets. As part of an integrated design, the ERO Console thereby complements the surroundings, and is quickly accepted as an organic component of the workplace.

VIKING uses a full spectrum of commercially available laminates.



Comfort at your fingertips

Easily accessible controls under the front of the work surface allows for quick and simple modulation of the surface by each individual for changes during their work schedule.



The Modular Solutions Collection of furniture is available for office furniture, support and training applications.



The Ergonomic Accessories Collection offers a full range of keyboard trays, mousing options, monitor arms, CPU holders, and foot rests.

VIKING

The Ergonomic Furniture Company

21480 Heath Avenue Lakeville, Minnesota 55044

Tel: 800-328-8385 Fax: 952-469-4503

www.vikingusa.com