

Series 12000 DC Converter

12010C10

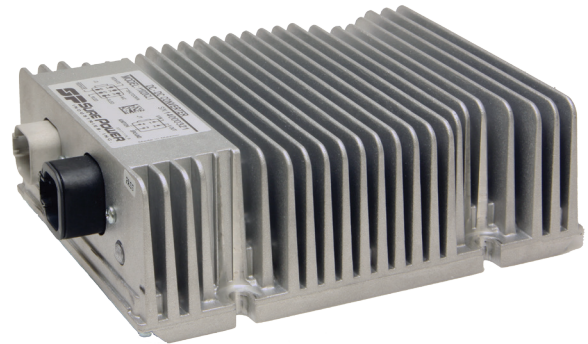
Eaton's 12010 Series DC Converter provides 10A of regulated 24V power from a 12V input. Allowing 24V loads to be powered from a 12V electrical system.

Features & Benefits

- Easily implemented into a system providing 24V power
- Allows use of 24V electrical components in a 12V electrical system providing greater system flexibility
- Clean output power able to power sensitive loads including radios and controllers
- Proven reliability with over 500,000 fielded units

Key Differentiators

- Sealed input and output connectors
- Switched and un-switched outputs
- IP67 Sealing
- EMC performance
- Operation to 85C
- RoHS Compliant
- Output short circuit protection
- Over temperature protection
- Low standby power draw



Options

- Deutsch mating connectors
- 10A to 55A models available
- Powder coated housing
- Battery Equalizer with output voltage of twice the input voltage

Standards & Certifications

SAE J1455, J1113, CISPR 25, E mark, RoHS

Dimensions in Inches (mm)

