

Battery Disconnect Switch

Series 15250

Specifications

Battery disconnect switch

Applications: A non-fused current interrupt disconnect designed for opening the circuit between a battery and the complete electrical load of a battery-powered system.

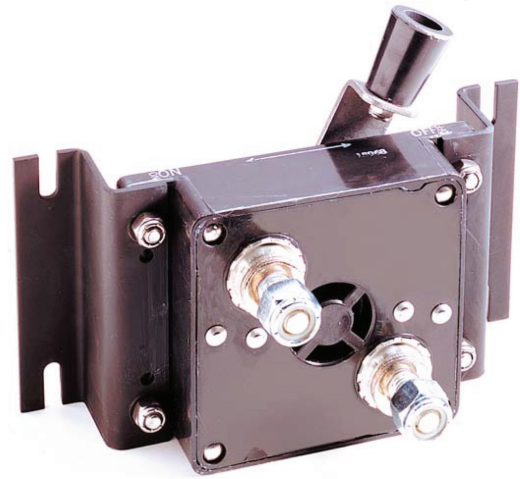
Rating: 400A continuous, 50Vac/VDC. Vehicle cranking and max. surge currents to 2000A (based on 20% duty cycle with ON times of 5 seconds max.).

Temperature Rating: -40°F (-40°C) to 150°F (65°C).

Termination: 1/2-13 Copper alloy stud.

Torque Rating: 420 in-lbs (47.5N • m) max.

Mounting Torque Rating:
with mounting brackets: 48 in-lbs (5.4N • m) max;
without mounting brackets: 10 in-lbs (1.1N • m) max



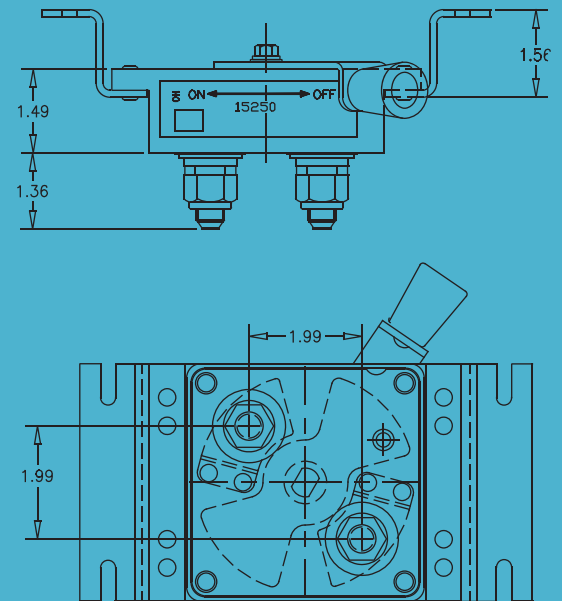
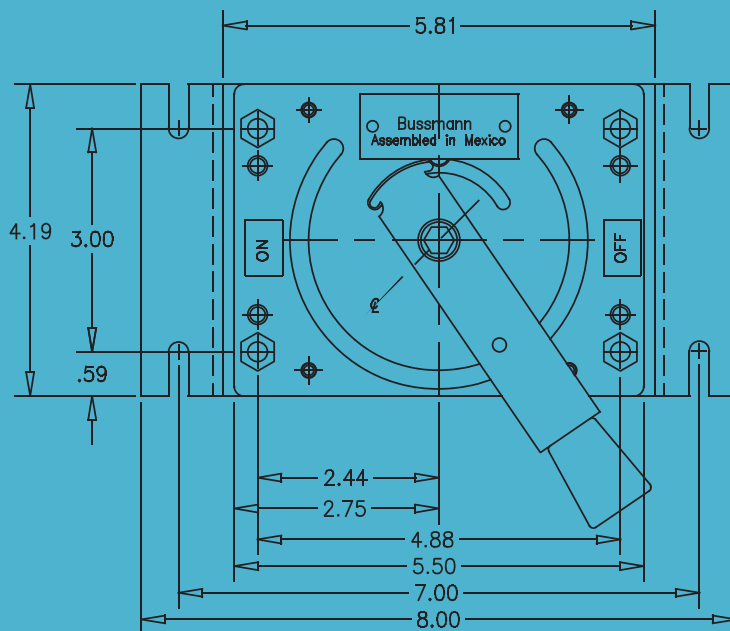
Options

Handles: Three handle styles available

Other: Lubricant-filled body with silicone sealant

Additional current ratings and configurations available

Dimensions in Inches (mm)



Ordering information

