

Series 21000 DC Converter

21060C00, 21080C00, 21100C00

The 21000 series of DC converters provide up to 100A of 12V power from a 24V input. Providing a fixed output voltage of 13.5V, the 21000 series of DC converters provide clean and reliable power for high current 12V loads.

Features & Benefits

Easily implemented into a system providing 12V power

Allows use of 12V electrical components in a 24V electrical system providing greater system flexibility

Leverage increased power of a 24V starting and charging system without having to migrate all components to 24V.

Proven reliability with over 200,000 fielded units

Key Differentiators

IP67 Sealing

Up to 100A DC Converter

MIL 461 EMC performance

Operation to 85C

Over temperature protection with reduced output current

Options

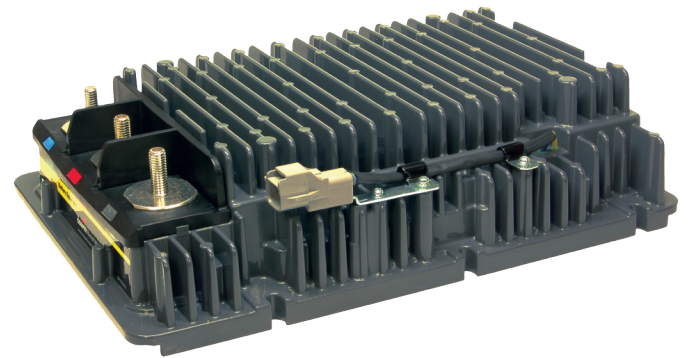
60A, 80A or 100A models available

Snap on terminal cover

Terminal barriers

Color coded terminal labels

RoHS



Standards & Certifications

SAE J1455, J1113, CISPR 25, E mark

Model	Voltage (input / output)	Output Current	Design Features
21060C00	24 / 12	60	IP 67, high current converter
21080C00	24 / 12	80	IP 67, high current converter
21100C00	24 / 12	100	IP 67, high current converter

Dimensions in Inches (mm)

