

# Series 12040 DC Converter

Eaton's 12040 Series DC Converter provides 24V power in a 12V system, which requires 24V power. The 12040 Series DC Converter provides an output current of 40 amps, has an enable turning on the converter and is IP67 sealed.

## Features & Benefits

Easily implemented into a system providing 24V power from a 12V input allowing use of 12V and 24V components on a vehicle

Allows use of 24V electrical components in a 12V electrical system providing greater system flexibility

With a low standby current of 0.7mA power is not used by the DC Converter when it is not required.

Clean output power able to power sensitive loads including radios and controllers

Proven reliability with over 200,000 fielded units

## Key Differentiators

- IP67 Sealing
- EMC performance
- Operation to 85C
- Output short circuit protection
- Over temperature protection
- Low standby power draw
- Ignition enable
- Terminal cover
- Powder coated housing



## Options

10A to 55A models available

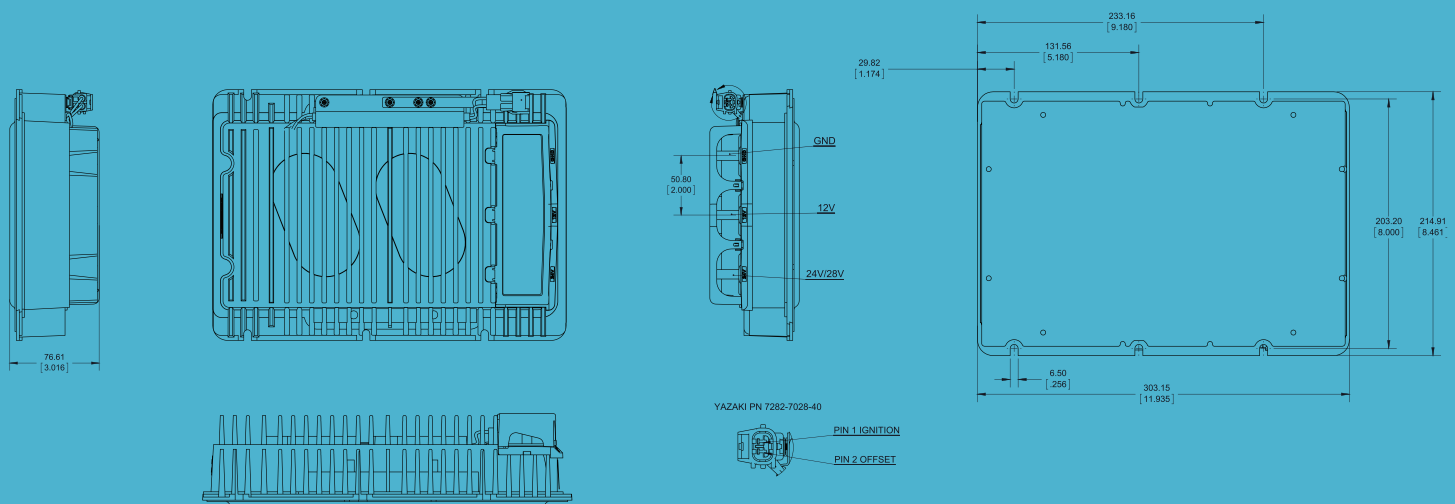
Output voltage offset to increase the output voltage

Battery Equalizer with output voltage of twice the input voltage

## Standards & Certifications

SAE J1455, J1113, CISPR 25, E mark, RoHS

## Dimensions in Inches (mm)



# Series 21000 DC Converter

## 21005C10, 21008C10, 21010C10, 21012C10

The 21000 series of DC converters provide regulated 12V power from a 24V input. Featuring sealed connectors and an IP67 sealed housing, the 21000 series of DC converters provide dependable power in the most challenging environments. Available with output currents of 5A, 8A, 10A, or 12A, the 21000 series of DC converters is sized to meet your power requirements.

### Features & Benefits

- Easily implemented into a system providing 12V power
- Allows use of 12V electrical components in a 24V electrical system providing greater system flexibility
- Clean output power for sensitive loads including radios and controllers
- Proven reliability with over 500,000 fielded units

### Key Differentiators

- Sealed input and output connectors
- Switched and un-switched outputs
- Full output current up to 85C
- IP67 Sealing
- ISO EMC performance
- Continuous operation up to 85C
- RoHS Compliant
- Output short circuit protection
- 5A, 8A, 10A and 12A in same package size



### Options

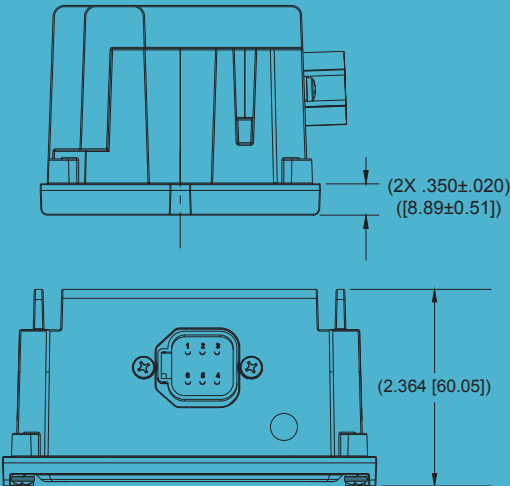
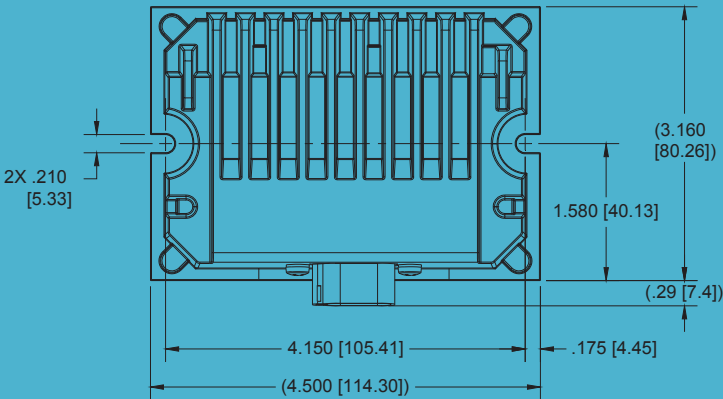
- Deutsch mating connectors
- 5A to 12A models available

### Standards & Certifications

SAE J1455, J1113, CISPR 25, E mark, RoHS

Model	Voltage (input / output)	Output Current	Design Features
21005C10	24 / 12	5	IP 67, switched & unswitched output
21008C10	24 / 12	7.5	IP 67, switched & unswitched output
21010C10	24 / 12	10	IP 67, switched & unswitched output
21012C10	24 / 12	12	IP 67, switched & unswitched output

### Dimensions in Inches (mm)



# Series 21000 DC Converter

## 21015C10, 21020C10

The 21000 series of DC converters provide regulated 12V power from a 24V input. Featuring sealed connectors and an IP67 sealed housing, the 21000 series of DC converters provide dependable power in the most challenging environments. Available with output currents of 15A or 20A, the 21000 series of DC converters is sized to meet your power requirements.

### Features & Benefits

- Easily implemented into a system providing 12V power
- Allows use of 12V electrical components in a 24V electrical system providing greater system flexibility
- Clean output power for sensitive loads including radios and controllers
- Proven reliability with over 500,000 fielded units

### Key Differentiators

- Sealed input and output connectors
- Switched and un-switched outputs
- IP67 Sealing
- ISO EMC performance
- Continuous operation up to 85C
- RoHS Compliant
- Output short circuit protection
- 15A and 20A in same package size



### Options

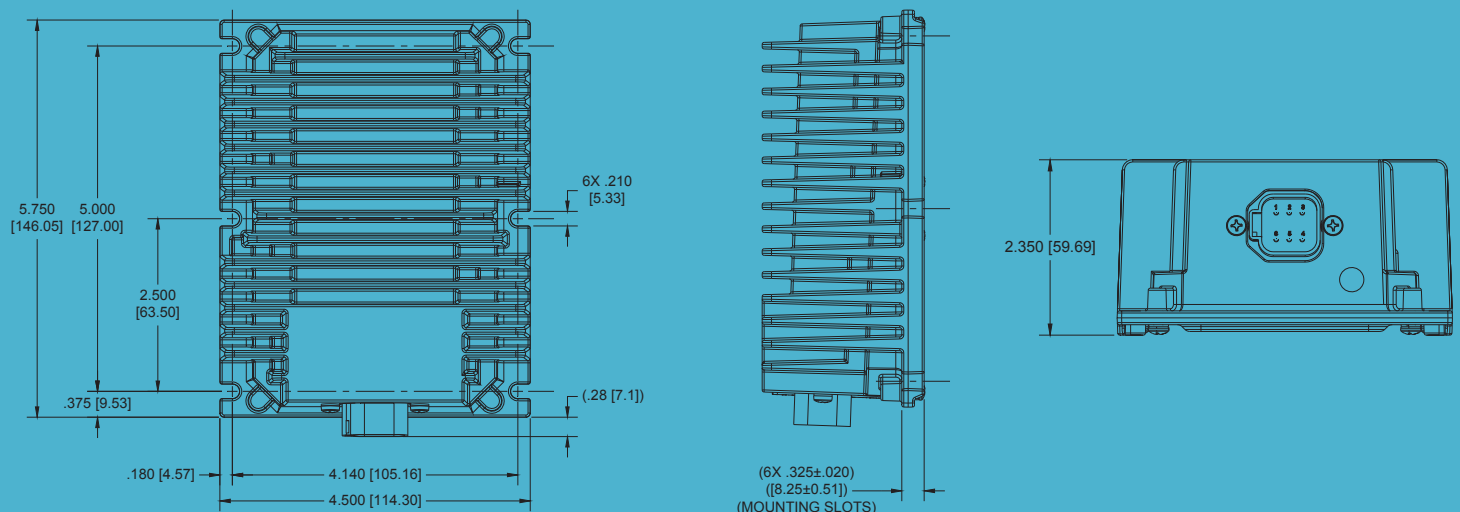
- Deutsch mating connectors
- 15A to 20A models available

### Standards & Certifications

SAE J1455, J1113, CISPR 25, E mark, RoHS

Model	Voltage (input / output)	Output Current	Design Features
21015C10	24 / 12	15	IP 67, switched & unswitched output
21020C10	24 / 12	20	IP 67, switched & unswitched output

### Dimensions in Inches (mm)



# Series 21000 DC Converter

## 21030C10

The 21030C10 DC converter provides regulated 12V power from a 24V input. Featuring sealed connectors and an IP67 sealed housing, the 21030C10 DC converter provides dependable power in the most challenging environments.

### Features & Benefits

- Easily implemented into a system providing 12V power
- Allows use of 12V electrical components in a 24V electrical system providing greater system flexibility
- Clean output power for sensitive loads including radios and controllers
- Proven reliability with millions of operating hours

### Key Differentiators

- Sealed input and output connectors
- Switched and un-switched outputs
- Full output current up to 85C
- IP67 Sealing
- ISO EMC performance
- Operation to 85C
- RoHS Compliant



### Options

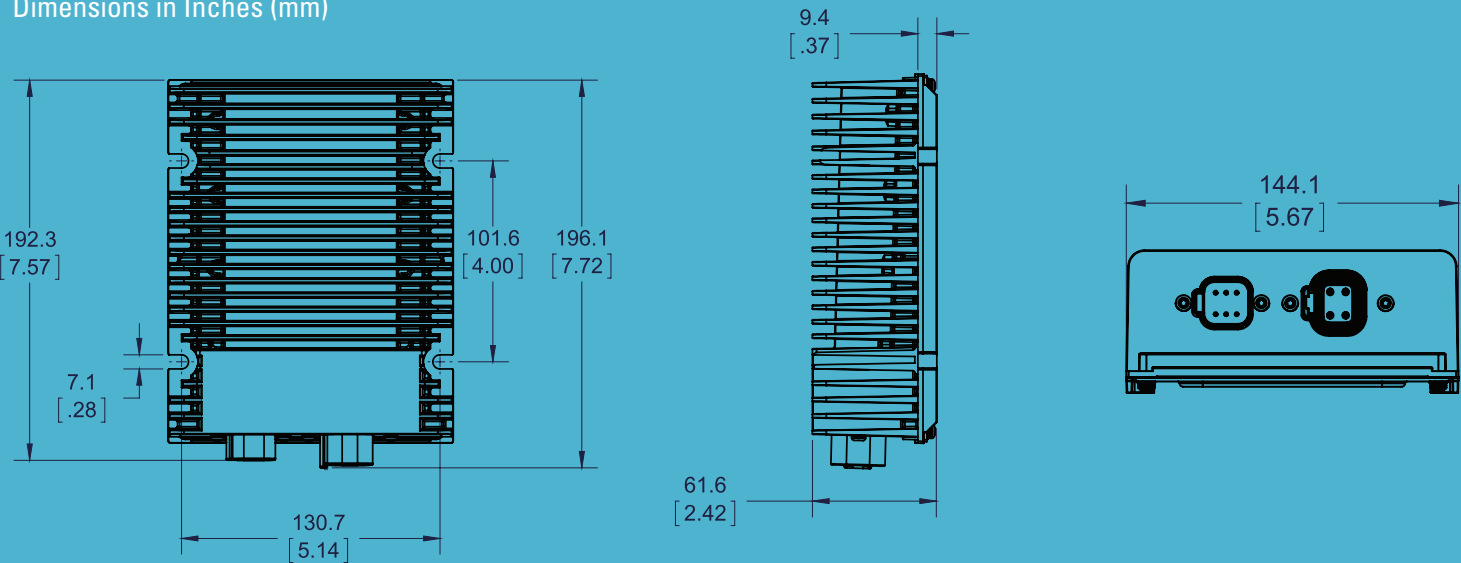
- Powder coated housing
- Battery Equalizer with output voltage of ½ the input voltage
- Deutsch mating connectors

### Standards & Certifications

SAE J1455, J1113, CISPR 25, E mark, RoHS

Model	Voltage (input / output)	Output Current	Design Features
21030C10	24 / 12	30	IP 67, switched & unswitched output

Dimensions in Inches (mm)



# Series 21000 DC Converter

## 21060C00, 21080C00, 21100C00

The 21000 series of DC converters provide up to 100A of 12V power from a 24V input. Providing a fixed output voltage of 13.5V, the 21000 series of DC converters provide clean and reliable power for high current 12V loads.

### Features & Benefits

Easily implemented into a system providing 12V power

Allows use of 12V electrical components in a 24V electrical system providing greater system flexibility

Leverage increased power of a 24V starting and charging system without having to migrate all components to 24V.

Proven reliability with over 200,000 fielded units

### Key Differentiators

IP67 Sealing

Up to 100A DC Converter

MIL 461 EMC performance

Operation to 85C

Over temperature protection with reduced output current

### Options

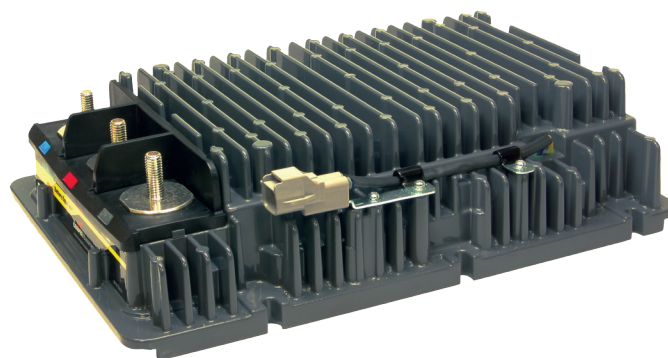
60A, 80A or 100A models available

Snap on terminal cover

Terminal barriers

Color coded terminal labels

RoHS



### Standards & Certifications

SAE J1455, J1113, CISPR 25, E mark

Model	Voltage (input / output)	Output Current	Design Features
21060C00	24 / 12	60	IP 67, high current converter
21080C00	24 / 12	80	IP 67, high current converter
21100C00	24 / 12	100	IP 67, high current converter

### Dimensions in Inches (mm)

