

Features and Benefits

- Provides a splash free crystal clear (non aerated) stream.
- Threads directly (and disappears) into the faucet spout.
- Helps facilitate spout manufacturing and reduce cost.
- Vandal proof by design.
- Built on Cascade® or Perlator® design.

Certification

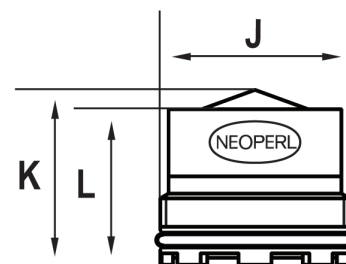
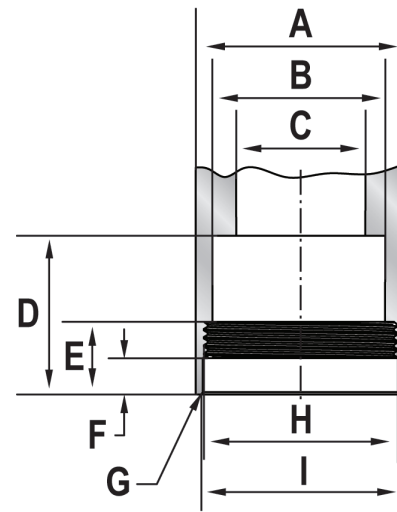
ANSI/NSF 61

Dimensions

No	mm	Tolerance	In	Tolerance
A	≥18.00		≥.709	
B	15.55	+ 0.05 / - 0.05	.612	+ .002 / - .002
C	≥11.00		≥.433	
D	≥14.00		≥.551	
E	≥6.70		≥.264	
F	3.30	+ 0.10 / - 0.10	.130	+ .004 / - .004
G	R 0.25	+ 0.05 / - 0.05	R .010	+ .002 / - .002
H	M16.5x1-8H			
I	16.70	+ 0.10 / - 0.00	.657	+ .004 / - .000
J	M16.5x1-8g			
K	15.25	+ 0.50 / - 0.50	.600	+ .020 / - .020
L	13.50	+ 0.50 / - 0.50	.531	+ .020 / - .020

Color Code

Dome: Red	Ring: White	Basket: Gray
-----------	-------------	--------------



Technical Data

Material:

Body Acetal
O-ring Silicone

Working temperature: 150°F
Working pressure: 125 psi