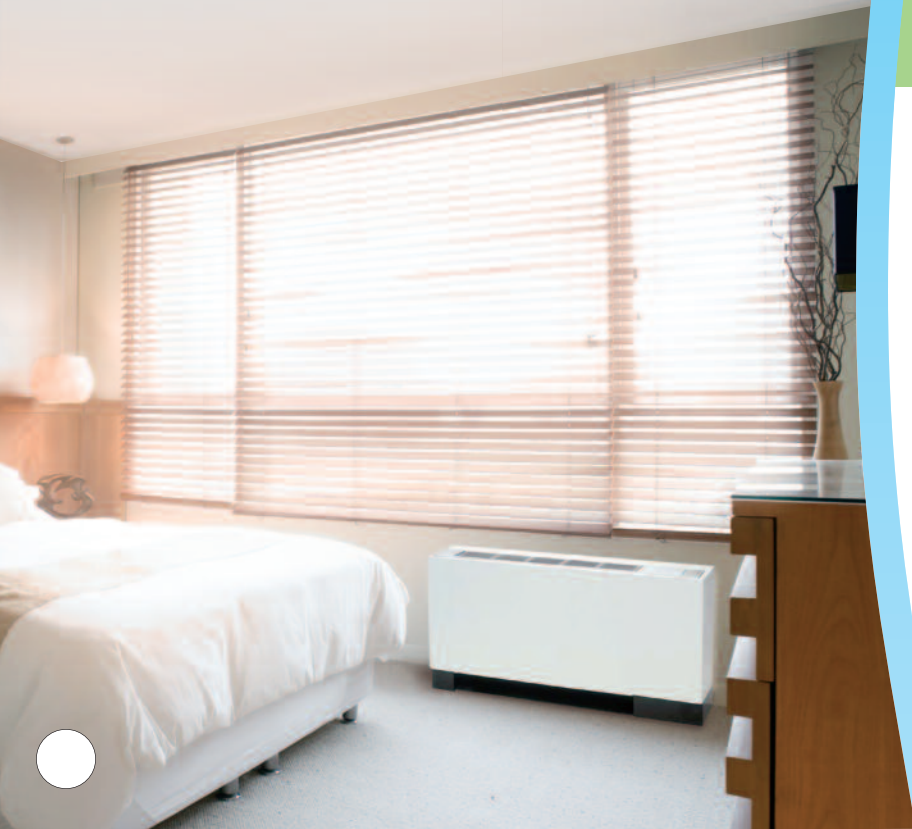


# RETROAIRE

*The Right Fit for Comfort*

## SELECTION GUIDE



For Replacement Packaged  
Terminal Air Conditioners and  
Water Source Consoles



Vertical Packaged  
Air Conditioners



## RetroAire Replacement PTAC/PTHP Chassis...

# Install Quality RetroAire PTAC Replacement Chassis for Quiet Comfort and Reliability

RetroAire replacement PTAC chassis are the ideal alternative for replacing or upgrading older and inefficient thru-the-wall PTAC's. Designed to fit into existing wall sleeves, the complete line of RetroAire chassis make it easy to replace older units that are no longer marketed by the original manufacturer. You can cost effectively upgrade your older air conditioner to higher efficiency equipment by sliding a new RetroAire PTAC chassis in an existing exterior wall opening.

## The RetroAire Advantage

- Over 75 standard units available to replace 50+ original models
- Environmentally friendly R-410A refrigerant
- Made in the USA, most units are UL and ULC Classified
- Every unit is tested on the assembly line before shipping
- Sample trials available
- No minimum or maximum on orders
- Custom-built orders welcome  
(minimum quantities may apply on these).

Competitive pricing, a national network of field representatives and dedicated factory support will assist you with your replacement or upgrade projects.

## Reduce Operating Expenses

RetroAire replacement PTACs offer EERs (Energy Efficiency Ratios) as high as 10.0, and water source EERs up to 13.6. RetroAire units are designed to meet ASHRAE efficiency requirements.

## Increased Operating Savings

RetroAire package terminal heat pumps can replace many existing thru-the-wall PTAC units, resulting in greater operating savings. Since heat pumps need only power to run a compressor and fan RetroAire upgrades can save as much as half of your electric bill during seasonal periods. In cooler regions heat pumps can result in substantial savings over existing PTAC's that use only electric resistance heat.

## RetroAire PTAC Features:

- Heavy gauge galvanized steel cabinets – G90U corrosion rating
- Quiet, low speed evaporator (indoor) blowers; two speed on most models
- All heat exchanger coils (condenser and evaporator) have high efficiency rifled-tubes
- Condenser (outdoor) fan remains off when unit is in heat or vent mode, for energy savings
- 208/230 volt standard, all models, 115 volt option most 09 & 12 models, 265/277 volt option, all models
- Positive condensate re-evaporation
- Corrosion inhibiting, condenser pan coating, accessible for cleaning through removable covers
- Preset switch for cycling or continuous operation of evaporator fan
- Standard 5 year compressor warranty on all units.

## Options: (Vary By Model)\*

- Electric heat 3,4 or 5KW on most units.
- Hydronic heat (water or steam) for selected models
- Replacement wall sleeves and indoor cabinets available as options to replace rusted, worn or damaged units
- Remote thermostat option, most models
- Dual voltage power option (emergency power systems)
- Sea coast coated coils and pans options
- Motorized fresh air damper option, with positive pressure seal and over-ride switch, most models
- Time delay and program relays for energy management systems

\* Consult unit specifications for available options

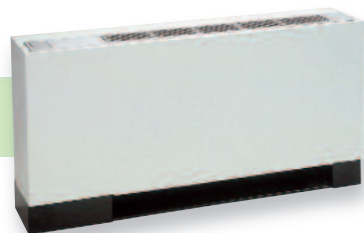


# RetroAire PTAC, VPAC and Water Source Replacement Selection Guide

ORIGINAL BRAND/MODEL	RETROAIRE MODEL	ORIGINAL BRAND/MODEL	RETROAIRE MODEL	ORIGINAL BRAND/MODEL	RETROAIRE MODEL
Adirondack Aire Series 16	R10	Comitale National Inc. Type CEAF	R35	Ice Cap RSEA	R35
Adirondack Aire Series 25	R15	Comitale National Inc. Type CEAL	R35	Ice Cap RSET	R25
Adirondack Aire Series 41	R15	Comitale National Inc. Type CEAR	R35	Ice Cap RSK	R22
Adirondack Aire Series 45	R10	Comitale National Inc. Type CFOO	R80	Ice Cap RSL-LX	R12
Adirondack Aire Series 801	CM	Comitale National Inc. Type CNIII0	R50	Ice Cap RSU	R80
Adirondack Aire Series CH	R20	Comitale National Inc. Type CRJO	R65	Ice Cap RSZ	R20
Adirondack Aire Series EA	R35	Comitale National Inc. Type CRKO	R60	Islandaire EZ Series 16	R10
Adirondack Aire Series EK	R60	Comitale National Inc. Type CRS	R35	Islandaire EZ Series 25	R15
Adirondack Aire Series MX	R40	Comitale National Inc. Type CTPI	R20	Islandaire EZ Series 40	R45
Adirondack Aire Series RK	R22	Comitale National Inc. Type CWRBO	R11	Islandaire EZ Series 41	R15
Adirondack Aire Series RM	R20	Cool Heat 700	R90	Islandaire EZ Series 45	R10
Adirondack Aire Series WMB	WM	Cool Heat AD	R90	Islandaire EZ Series 81	CM
Airdondack Aire Series ZCR	R30	Cool Heat RM	R20	Islandaire EZ Series AD	R90
Applied Comfort CSMB	R30	Dunham Bush Newport I, II, III & IV	R50	Islandaire EZ Series C7	R21
Applied Comfort DMQ	R30	Emerson 8T	Contact Factory	Islandaire EZ Series CM	R20
Applied Comfort SCEA	R20	Fedders CMEA	R40	Islandaire EZ Series CS	R30
Applied Comfort SCHA	R20	Fedders CME0 "Unizone"	R80	Islandaire EZ Series EB	Contact Factory
Amana Curtain Unit	Contact Factory	First Company DPU	VPRC/VPRH09-12	Islandaire EZ Series ED	R35
American Air Filter 16	R10	Friedrich 700	R90	Islandaire EZ Series ET	R25
American Air Filter 25	R15	Friedrich 702	R20	Islandaire EZ Series JA	R65
American Air Filter ENR	R10	Friedrich 703	R20	Islandaire EZ Series KF	R60
American Standard 40	R45	Friedrich 800	CW	Islandaire EZ Series MX	R40
American Standard 41	R15	Friedrich 801	CM	Islandaire EZ Series N3	R50
American Standard 45	R10	Friedrich AD	R90	Islandaire EZ Series PT	R12
Armstrong Magic Pak	VPRC/VPRH30-36	Friedrich ET	R25	Islandaire EZ Series RB	R11
Carrier 50ET	VPRC/VPRH09-18	Friedrich WC	CW	Islandaire EZ Series RK	R22
Carrier 50QT	VPRC/VPRH09-18	Ice Air RS16	R10	Islandaire EZ Series RM	R20
Carrier 51P	R30	Ice Air RS41	R15	Islandaire EZ Series RT	R24
Carrier 51PH	R30	Ice Air RSCM/A	R20	Islandaire EZ Series SC	R20
Carteret 45	R10	Ice Air RSCM/B	R90	Islandaire EZ Series UN	R80
Climate Control WM	WM	Ice Air RSCM/C	R90	Islandaire EZ Series WH	CW
Climate Master 700	R90	Ice Air RSCT	R24	Islandaire EZ Series WM	WM
Climate Master 701	R21	Ice Air RSEA	R35	Keeprite C	R30
Climate Master 702	R20	Ice Air RSF	R40	Keeprite CHP	R30
Climate Master 703	R20	Ice Air RSK	R22	Lennox PTEIA	R12
Climate Master 704	R20	Ice Air RSK	R23	McQuay 45	R10
Climate Master 800	CW	Ice Air RSK/K	R60	McQuay EA	R35
Climate Master 801	CM	Ice Air RSZ	R20	McQuay EJ	R65
Climate Master AD	R90	Ice Cap RS16	R10	McQuay EK	R60
Climate Master ET	R25	Ice Cap 40	R45	McQuay ES	R35
Climate Master WC	CW	Ice Cap RS41	R15	McQuay J	R65
Comitale National Inc. Type CAF16	R10	Ice Cap RS45	R10	McQuay K	R60
Comitale National Inc. Type CAF250	R15	Ice Cap RSC	R30	McQuay MQA	R35
Comitale National Inc. Type CA410	R15	Ice Cap RSCM	R90	McQuay MQT	R35
Comitale National Inc. Type CA45	R10	Ice Cap RSCT	R24	McQuay PDAE	R35

*Continues next page*

**PTAC**



**VPAC**



# RetroAire PTAC, VPAC and Water Source Replacement Selection Guide *(continued)*

ORIGINAL BRAND/MODEL	RETROAIRE MODEL	ORIGINAL BRAND/MODEL	RETROAIRE MODEL	ORIGINAL BRAND/MODEL	RETROAIRE MODEL
McQuay PDHE	R35	RetroAire RC12	R12	Simon-Aire Model SSKK	R60
McQuay PKES	R60	RetroAire RC15	R15	Simon-Aire Model SSMX	R40
McQuay PKHS	R60	RetroAire RC/RH20	R20	Simon-Aire Model SSW5FC	CW
McQuay PMEH	R65	RetroAire RC21	R21	Simon-Aire Model SSZ	R20
McQuay PMEJ	R65	RetroAire RC/RH22	R22	Singer 41	R15
McQuay PMES	R35	RetroAire RC23	R23	Singer 45	R10
McQuay PNES	R10	RetroAire RC/RH24	R24	Singer EA	R35
McQuay PNHS	R10	RetroAire RC/RH25	R25	Singer EJ	R65
McQuay RS	R35	RetroAire RC/RH30	R30	Singer EK	R60
McQuay RSCT	R24	RetroAire RC/RH35	R35	Singer ES	R35
McQuay WM	WM	RetroAire RC40	R40	Singer J	R65
Mueller "Climatrol"	R80	RetroAire RC/RH45	R45	Singer K	R60
Nelson Aire 16	R10	RetroAire RC50	R50	Singer RS	R35
Nelson Aire 25	R15	RetroAire RC/RH55	Contact Factory	Singer VI	VPRC/VPRH09-18
Nelson Aire 45	R10	RetroAire RC/RH60	R60	Singer WM	WM
Remington 41	R15	RetroAire RC65	R65	TPI Ra-Matic	R20
Remington 45	R10	RetroAire RC/RH71	VPRC/VPRH09-18	US A/C Products DIU	VPRC/VPRH09-12
Remington EA	R35	RetroAire RC/RH80	R80	Weather Twin RM	R20
Remington EB	Contact Factory	RetroAire RC/RH90	R90	Weather Twin S	R20
Remington EJ	R65	RetroAire VPAC/VPHP	VPRC/VPRH09-36	Weather Twin SC	R20
Remington EK	R60	RetroAire VRAC/VRHP	VPRC/VPRH09-18	Westinghouse RB	R11
Remington ES	R35	RetroAire WMH	WM	Worthington "Climatrol"	R80
Remington J	R65	Sears 8T	Contact Factory	Zoneaire C	R30
Remington K	R60	Simon-Aire SS16	R10	Zoneaire CSM	R30
Remington RS	R35	Simon-Aire SS45	R10	Zoneaire CHP	R30
RetroAire CMH	CM	Simon-Aire Model SSCM	R90	Zoneaire RM	R20
RetroAire CWC/CWH	CW	Simon-Aire Model SSCT	R24	Zoneaire S	R20
RetroAire RC/RH10	R10	Simon-Aire Model SSEA	R35	Zoneaire SC	R20
RetroAire RC/RH11	R11	Simon-Aire Model SSK	R22	Custom Applications - Consult Factory	

## Also available from RetroAire: custom cabinetry, replacement wall sleeves, cabinet panels, louvers, and complete design and manufacture of replacements for conditioners not shown on the Selection Guide

In addition to the options shown in this Selection Guide, RETROAIRE can supply replacement wall sleeves, outside louvers, cabinet fronts and accessories for the units listed. Other options for the line include:

- Sea Coast Coated Coils and Drain Pans
- Program relay for energy management systems
- Time delay relay
- 2 Voltage Power (Emergency power)

RETROAIRE has a major design and manufacturing facility which can be used for the engineering and development of replacement chassis not shown in the above chart.

Minimum orders do apply on custom orders, but the added cost of custom development for larger facilities is very reasonable.

Contact your local RetroAire Representative or call RetroAire for more details. Specifications subject to change without notice.

**RETROAIRE**  
The right fit for comfort

Distributed by RoomAir Supply  
1-800-891-4729  
[www.RoomAir.com](http://www.RoomAir.com)

