



Horizon Centrifuge Model 853VES

provides high performance,
versatility and quick results
to meet the needs of the most
demanding laboratories.

OVERVIEW

The Model 853VES is a medium capacity centrifuge with unmatched performance. Its high-performance design can produce Platelet-Poor-Plasma in as little as 3 minutes, yet it still offers versatility for sensitive urine and fertility samples. The exclusive Drucker rotor and airflow design assures the highest quality separations every time. Complete digital controls make it easy to adjust settings and the internal memory allows for common settings to be stored for later use.

FEATURES

- **Electronic Timer and Speed Control w/Display:** Selectable time setting from 0 to 99 minutes, or hold for continuous operation. Control speed from 500 RPM to the maximum rotor speed.
- **Capacity:** Up to twelve (12) 1-10 mL tubes with horizontal rotor
Up to twenty (20) 1-15 mL tubes with fixed angle rotor
Up to six (6) 50 mL tubes with fixed angle rotor
- **Memory:** Store up to 10 user defined preset configurations
- **Brushless DC Motor:** For smooth and quiet operation with no routine maintenance
- **Variable Acceleration and Deceleration:** Customize the run from start to finish
- **Quiet Operation with Low Vibration:** Double-encased motor assures quiet performance and low out-of-balance vibration
- **End-of-Run Audible Indicator:** Sounds when the rotor has stopped to inform the operator that a cycle is complete

SAFETY

- **Automatic Lid Lock:** Centrifuge will not run with the lid open, and the lid cannot be opened while samples are spinning
- **Positive Lid Latching:** Firm mechanical latching of the lid prevents the escape of debris in case of breakage
- **Imbalance Detection:** If an imbalance is detected, the centrifuge will come to a safe controlled stop
- **Welded Steel Construction:** Provides strength and durability for years of use
- **Shatterproof Clear Lid:** Offers safe observation and access for photo tachometer
- **Regulatory Approvals:** Certified to UL & CSA Standards, CE marked

APPLICATIONS

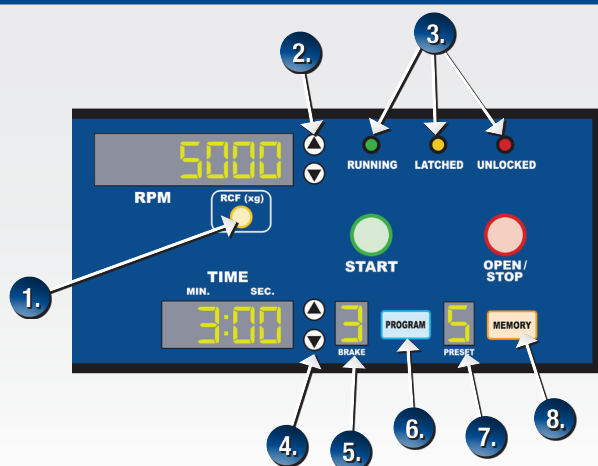
- Coagulation
- Fertility
- Platelet Poor Plasma
- Platelet Rich Plasma
- Serum
- Urinalysis
- General Cell / Tissue Processing

853VES CENTRIFUGE DISPLAY



- 1..... Horizontal Rotor (Standard)
- 2..... Locking Knob
- 3..... Clear Lid for Easy Viewing
- 4..... Lid Safety Interlock System
- 5..... Control Panel (see below)
- 6..... Cabinet

853VES CENTRIFUGE CONTROL PANEL



- 1..... RCF Conversion Button
- 2..... Up/Down RPM Change Buttons
- 3..... Indicator Lights
- 4..... Up/Down Time Change Buttons
- 5..... Brake Display
- 6..... Program Button
- 7..... Memory Preset Display
- 8..... Memory Button

853VES CENTRIFUGE SPECIFICATIONS

Electrical

Voltage	115/230 Volts ($\pm 10\%$)
Frequency	50/60 Hz
Max. Power Requirements	200 Watts
Protection Breaker	4 Amp. Re-settable
Centrifuge Motor	1/2 H.P. Brushless DC

General

Overall Dimensions	Height	8.5 in. (23 cm)
	Width	12.5 in. (32 cm)
	Depth	15.5 in. (39 cm)
Weight		30 lbs. (13.7 kg)
Min. Acceleration Time		15 seconds
Max. Deceleration Time		22 seconds
Timer		Electronic, w/hold or 0 to 99 minutes

Speed Range

Standard Horizontal Rotor	500 to 4,000 RPM
Performance Plus Horizontal Rotor	500 to 5,000 RPM
20 Place Fixed Angle Rotor	500 to 4,000 RPM
6 Place Fixed Angle Rotor	500 to 4,000 RPM

Force Range



Standard Horizontal Rotor with 75 mm Tube Holder	40 to 2,000 xg
Standard Horizontal Rotor with 100 mm Tube Holder	40 to 2,400 xg
Performance Plus Horizontal Rotor with 75 mm Tube Holder	40 to 3,100 xg
Performance Plus Horizontal Rotor with 100 mm Tube Holder	40 to 3,800 xg
20 Place Fixed Angle Rotor with 75 mm Tube Holder	40 to 1,600 xg
20 Place Fixed Angle Rotor with 100 mm Tube Holder	40 to 1,800 xg
20 Place Fixed Angle Rotor with 125 mm Tube Holder	40 to 2,000 xg
6 Place Fixed Angle Rotor with 50 mL Tube Holder	40 to 1,800 xg

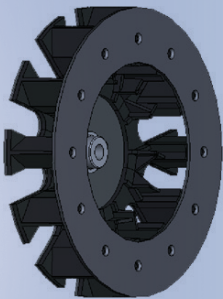
Warranty

The Drucker Company warrants that this centrifuge is free from defects in workmanship and parts for 2 years.

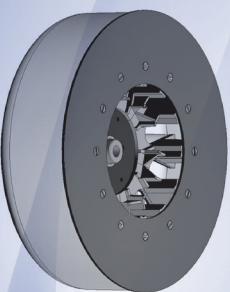
853VES CENTRIFUGE ROTOR & INCLUDED ACCESSORIES

Included with each centrifuge

	QTY Included	Part Number	Comments
	12	771 3043	For use with 75 mm tubes
	12	771 3040	For use with 100 mm tubes
	2	771 3064	For use with 13 x 75 mm vials
	2	771 3066	For use with 13 x 100 mm vials
	2	771 3068	For use with vials up to 1 mL
	24	771 3065	For use with vials between 1.5 mL and 2 mL



12 Place Horizontal Rotor (Standard)
p/n 7786024










12 Place Horizontal Rotor
(Performance Plus) p/n 7786010

Optional accessories

	0.25" Cushion Spacer	Available as an accessory	9150	For use with glass vials or tubes
	1" Cushion Spacer	Available as an accessory	1525	For use with glass vials or tubes
	Tube Holder Cap	Available as an accessory	7713011	For use when additional protection is desired

853VES CENTRIFUGE ROTOR & INCLUDED ACCESSORIES

Included with each centrifuge

		QTY Included	Part Number	Comments
	75 mm Tube holder	20	7713043	For use with 75 mm tubes
	100 mm Tube holder	20	7713040	For use with 100 mm tubes
	125 mm Tube holder	20	7713044	For use with 125 mm tubes
	13 x 75 mm Insert	2	7713064	For use with 13 x 75 mm vials
	13 x 100 mm Insert	2	7713066	For use with 13 x 100 mm vials
	0.5 to 1 mL Tube adapter	2	7713068	For use with vials up to 1 mL
	1.5 to 2 mL Tube adapter	24	7713065	For use with vials between 1.5 mL and 2 mL

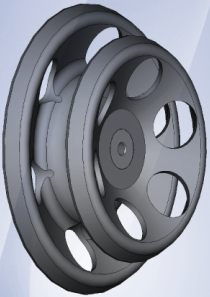


20 Place Fixed Angle Rotor
p/n 7786042

Optional accessories


	0.25" Cushion Spacer	Available as an accessory	9150	For use with glass vials or tubes
	1" Cushion Spacer	Available as an accessory	1525	For use with glass vials or tubes
	Tube Holder Cap	Available as an accessory	7713011	For use when additional protection is desired

853VES CENTRIFUGE ROTOR & INCLUDED ACCESSORIES



6 Place Fixed Angle Rotor
p/n 7786044

Included with each centrifuge

	QTY Included	Part Number	Comments
	75 mm Tube holder	6	771 3065
For use with 50 mL flat bottom or conical vials or tubes			

Optional accessory

	50 mL Conical tube insert	Available as an accessory	7787060	For use with conical vials or tubes
---	------------------------------	---------------------------------	---------	-------------------------------------



Made in the U.S.A.

NOTE: Specifications subject to change.



THE DRUCKER CO.
Providing Quality Centrifuges since 1932

168 Bradford Drive, Port Matilda, PA 16870 U.S.A.
+1-814-692-7661 • Fax: +1-814-692-7662
www.druckercompany.com

Form No. 392 Rev. C